

7mm SURFACE MOUNT CIRCULATOR SERIES

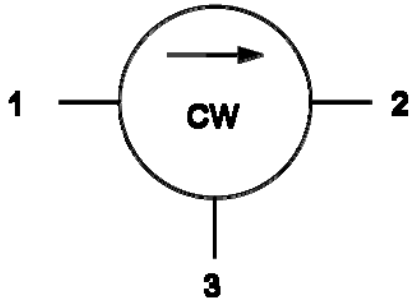
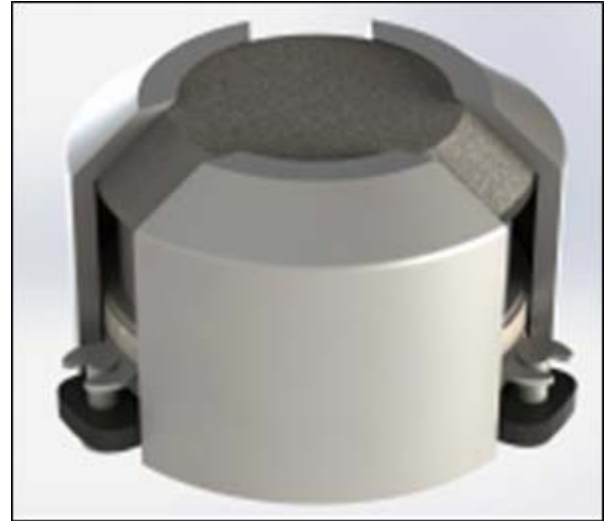


Figure 1. Circulator Block Diagram



Electrical Specifications:

| Part Number | Frequency Range (GHz) | Insertion Loss (dB) Max. | Isolation (dB) Min. | Return Loss (dB) Min. | IMD (2 X 5W) dBc Min. | Average/Peak Power (W) | Operating Temp (°C) |
|--------------|-----------------------|--------------------------|---------------------|-----------------------|-----------------------|------------------------|---------------------|
| SKYFR-002118 | 2.110 – 2.180 | 0.35 | 20 | 20 | 55 | 20/100 | -40 to +105 |
| SKYFR-002096 | 2.300 – 2.400 | 0.40 | 20 | 20 | 55 | 20/100 | -40 to +105 |
| SKYFR-002101 | 2.496 – 2.690 | 0.40 | 20 | 20 | 60 | 20/100 | -40 to +105 |
| SKYFR-002267 | 3.300 – 3.800 | 0.42 | 20 | 20 | 55 | 20/100 | -40 to +105 |
| SKYFR-002038 | 3.400 – 3.600 | 0.30 | 21 | 21 | 58 | 30/150 | -40 to +110 |
| SKYFR-001924 | 3.600 – 3.800 | 0.35 | 20 | 20 | 55 | 20/100 | -40 to +105 |
| SKYFR-002098 | 3.700 – 3.980 | 0.40 | 20 | 20 | 55 | 20/100 | -40 to +105 |
| SKYFR-002150 | 3.800 – 4.200 | 0.50 | 18 | 18 | 55 | 20/100 | -40 to +105 |
| SKYFR-002061 | 4.400 – 5.000 | 0.50 | 16 | 16 | 55 | 15/30 | -40 to +105 |
| SKYFR-001996 | 4.800 – 5.000 | 0.25 | 20 | 20 | 55 | 20/100 | -40 to +105 |
| SKYFR-002036 | 5.200 – 5.500 | 0.40 | 20 | 20 | 55 | 15/30 | -40 to +105 |

Extended operating temperature range and custom frequency range designs available on request